



Cartadis Pay Print Solution V2.0 for TCPrint TCP2-Print

Software installation manual

TABLE OF CONTENTS

SECTIONS	PAGE
1. Introduction	3
2. Installation	5
2.1. On a standard station	5
2.2. On a print server	5
3. Configuration	7
3.1. Monitoring a printer	7
3.2. Setting of prices	8
3.3. Selection of card reader	10
3.4. Unit of card value	10
3.5. TCP Port	11
3.6. Import/Export of configuration	11
4. Cartadis Pay Print Solution an its users	13

1.

Introduction

Thank you for your choosing the TC Print product, it is comprised of a **Cartadis** card reader and the ***Cartadis Pay & Print Solution (CPPS)*** software. This software is to be installed on a PC running Windows. It deals with the communication between your computer and the card reader, it intercepts print jobs from any Windows applications and enables the payment at each work station by using a **Cartadis** prepaid card.

The **Cartadis** card reader and the **CPPS** software must be installed on **all** workstations to enforce payable print jobs.

CPPS is compatible with any Windows printer (laser, inkjet, USB port or serial ...) whatever the architecture chosen (local printer, shared by a server). **CPPS** is compatible with Microsoft Windows NT /2000/XP/Vista. It does not run with UNIX, Linux, Mac or others.

A demonstration mode of **CPPS** enables the software to be evaluated without requiring a card reader. In this mode, a USB key replaces the card reader.

The current **CPPS** version manages the magnetic card reader **Cartadis TCRS** and the chip / MIFARE card reader **Cartadis TCP2**. These card readers are connected to the customer workstation by means of an RS232 link. If the customer workstation does not provide such an interface, a USB-RS232 converter must be installed (available from CMF under the reference XCO-USB/SERIE).

2.

Installation

Before installing **Cartadis Pay Print Solution**, check that the programme « .Net Framework 2.0 » is installed on your PC. If you don't have this version, it can be downloaded free from the Microsoft address: <http://www.microsoft.com/downloads>.

2.1. On a standard station (client PC)

Launch the installation programme **Cartadis Pay Print Solution Setup.exe** . This programme automatically installs all necessary application components to a folder chosen by the user (by default C:\Programme Files\Cartadis Pay Print Solution).

Note:

You must get have administrator rights on your machine for installing and configuring CCPC software.

The printer management service is installed as standard Windows service. It is accessible through Windows configuration panel from the Administration tools => Services => **Cartadis Pay Print Solution**.

Once installed, the installation programme prompts to launch the **Cartadis Pay Print Solution Administration** programme to allow the selection of the printers to manage and the setting of print job prices.

2.2. On a print server

To control the printers shared by a print server, you must install the **CPPS** software on the print server and on the client PC.

3.

Configuration

Cartadis Pay Print Solution Admin is a management interface that will permit the management of all printers and the setting of print job prices.

Note: You must have Administration privileges to run this Admin programme.

3.1. Monitoring a printer

The list of all printers installed on your PC is displayed in the main window of the Admin application.

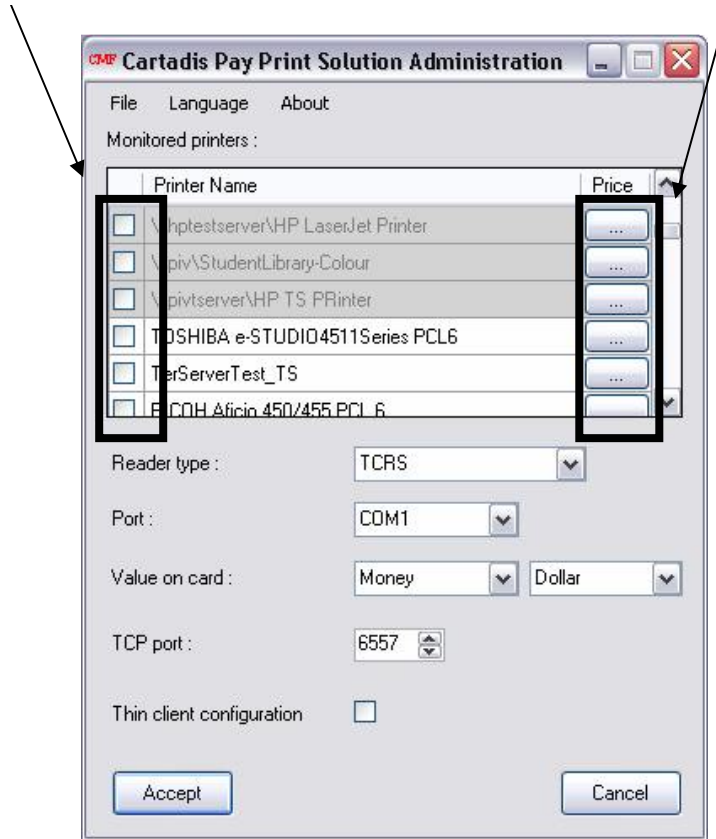
To monitor a printer (make it payable), just check the corresponding square in the column for monitored status and conversely for disabling a monitored printer. You can select any number of printers that are installed on the workstation.

Once a printer is checked, the default printing price is set at zero and will need to be set. For setting particular print job price on a printer, click the corresponding Price button.

The **Admin** programme window is as follows:

Monitored printers (payable) are selected

Access button to price setting



Note :

Printers displayed in grey colour are networked. You cannot choose to directly monitor these printers from a client station. For monitoring these printers, you must install the software **Cartadis Pay & Print Solution** on the server (i.e. : the PC sharing this printer) and configure the printer as you would on a workstation. From then on, any printing from a client workstation will automatically be charged.

3.2. Setting Prices

Printing prices are specific to each printer. You can easily adapt your prices to the type of equipment used.

The price window of a printer is displayed by clicking the corresponding button in the column « Prices » from the main window.

The price setting window is as follows:



Setting	Options
Format	Allows the paper size to be automatically detected or forced
Colour	Allows the colour to be automatically detected or forced
Post processing raw files	Selecting this options allows the detection of multiple copies of print jobs.
Prices	Sets the price per page for the listed formats

Four different prices may be set: A4 B&W, A3 B&W, A4 Colour, A3 Colour. The software automatically uses the default printing parameters entered by the user for defining the price mode (size and colour). However, size and/or colour may be forced.

Once the configuration is completed, changes are accepted by clicking the button « Accept ». Parameters remain unchanged by clicking «Close ».

3.3. Card reader selection

The scrolling list « reader type » enables the CARTADIS reader, used for printing payment, to be chosen.



Setting	Options
Reader Type	TCRS TCP2 Evaluation
Port	COM1 COM2 <i>Displays ports currently installed on Computer</i>
Value on Card	Money Units
Currency	Euro Dollar Pound

The software version 2.0.1 is compatible with the **Cartadis TCRS** and **Cartadis TCP2** units.

The port to which the reader is connected, must be selected from the scrolling list « Port », for example COM1.

The **Cartadis** reader will have to be correctly configured, particularly, the group numbers. Refer to the **Cartadis** manual for checking and/or modifying this **Cartadis** reader internal parameter.

If you wish to test this software, an evaluation mode is available. In this configuration, the reader is simulated by a USB key inserted into the PC. You will have to:

- Create a text file in the root of your USB key which must be named « CartadisPurse.txt » (be careful with capital letters).
- Write a numerical value (example : 1234) with a text editor such as Notepad.. This value represents your account balance.
- Save the file.

On request of software for card insertion, you just have to insert your USB key then validate to receive the print out.

3.4. Unit of value of the card

The balance of cards may be expressed either in units or money. This field must be selected to inform the software the way to interpret the value read from cards.

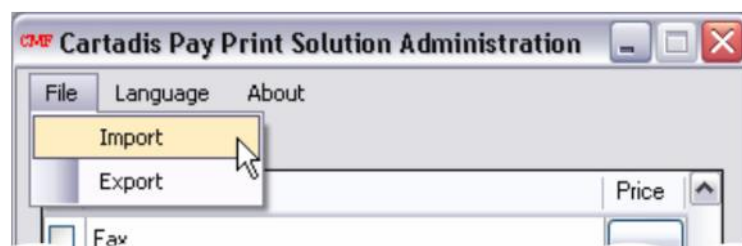
3.5. TCP port

If you wish to manage a remote printer (installed on another networked machine), the Cartadis service on the server PC has to send data about printing process to the Cartadis service of the client PC by means of the TCP/IP protocol. A « TCP port » enables a communication channel to be created between the two machines. By default, **Cartadis Pay & Print Solution** uses the port 6557. It may be modified, should it be already used by software already installed on your machine.

Make sure that no « fire wall » rules can block communication on this port.

Note: TCP/IP port numbers may be between 0 and 65535.

3.6. Import/Export of configuration



The File/Export option enables your entire configuration to be saved to a file with the default extension *.conf.

The File/Import enables a file to be selected for loading an existing configuration.

4.

Cartadis Pay Print Solution and its users

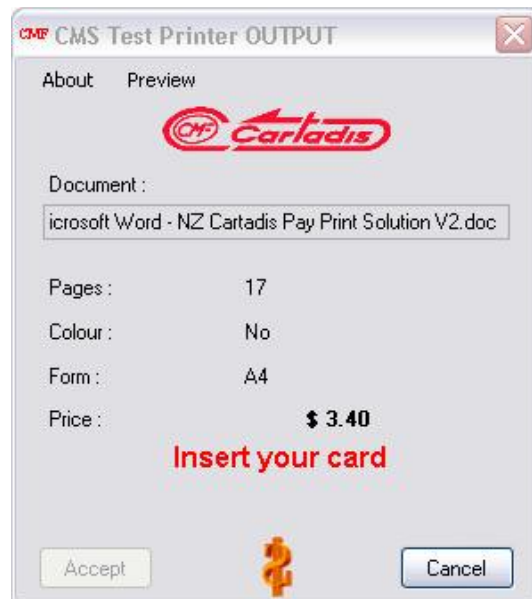
Once the configuration is completed, modifications are validated by clicking the « Accept » button

The « Cancel » button enables parameters to be restored to the settings they were before launching the programme.

The **CPPS** programme will automatically start when the PC starts.

When a user prints a document, it will be locked in the waiting queue of Windows print spooler and a window will prompt the user for payment.

Example of the Popup Window that will display when a payable print job is detected.



The button « Accept » will be enabled once the user has inserted a card with a sufficient credit. Printing is released by clicking this button.

The Popup Window is updated with the credit remaining on the card as illustrated below.



Note:

Any illicit attempt to release printing by using Windows functions erases the print process.